

# DRY GLAZES

Georgies is excited to offer a premium selection of our glazes in dry form! This is perfect for higher-volume users and studios wanting to avoid water weight or gums. It's especially helpful for mixing your own dipping glazes.

We offer 54 dry choices from across our glaze lines. The weight varies from 50-57lb bags, depending on the glaze. Check our website for pricing.

## Dry Glaze Fun Facts:

During transport, particle segregation occurs when the materials are shaken or agitated. Thoroughly mix your dry glaze before parting or wetting to ensure the materials are evenly distributed. An improperly proportioned mix will lead to inconsistent results.

- 50lb of dry glaze will produce approximately 6 gallons, depending on your desired specific gravity.
- No gum is added to dry glazes. Typically, glazes contain two gums: CMC Gum and Gum Arabic.

**CMC Gum** is added for the suspension of the slurry; as a binder to help it adhere to the pot; and to slow the drying of the glaze for better brushing.

**Gum Arabic** is added as a binder and glaze hardener for a less powdery glaze and for easier handling during drying. Either ingredient can be added upon request.

Measure and record the Specific Gravity when mixing to achieve results that can be replicated. Specific Gravity will vary depending on the glaze. A no-gum variant for dipping will have a range of specific gravity from 1.45-1.55. (CAUTION: without CMC Gum, a specific gravity thinner than 1.45 will most likely cause deadpanning of the glaze.)

We recommend sieving freshly mixed glazes to help break up any clumped material. This will ensure all material has been thoroughly wetted and is completely mixed. For most glazes, use a 60-mesh sieve. For speckled glazes or those that contain granular material, use a 40-mesh sieve.

## What you need for mixing dry glazes:

- Respirator or dust mask (must be worn at all times during the mixing process!)
- Whisk or drill mixer
- Three 5-gallon buckets
- Dry glaze
- 3 - 4½ gallons of water
- Test tiles
- Sieve (40- or 60-mesh)

Recommended, but optional to have on hand:

- Gram scale
- Graduated cylinder
- Veterinary syringe (150+ mL)
- Hydrometer (can be used instead of the scale, cylinder and syringe)

# Dry Glaze Mixing Instructions

1. **Equipment.** You will need three 5-gallon buckets, a mixer, a sieve, and some test tiles.
2. **Protect yourself.** Put on your respirator or dust mask, ensuring a good seal to your face. Wear this at all times when you are working with dry materials.
3. **Mix the dry glaze.** If you will be parting out the dry glaze, thoroughly mix it to ensure proper proportion. We recommend mixing the entire batch at once. Use a whisk or drill mixer to mix the dry ingredients.
  - a. To minimize dust, drill a hole through the bucket lid and insert the shaft of the mixing head and attach to your drill.
  - b. Pour the entire bag into two 5-gallon buckets. Mix. Transfer half the mix between the buckets and mix again. Repeat 2-3 times.
  - c. Pour the mixed dry glaze into one bucket.
4. **Add water.** For 50 lbs of dry glaze, approximately 3-4.5 gallons of water will be needed. Start at the lower end so that there is room to adjust to the desired specific gravity. A typical glaze will have between 50%-70% of dry weight in water, differing with the plastic (typically clay) content of the glaze. (Unfamiliar with Specific Gravity? Visit [digitalfire.com](http://digitalfire.com) and search for "specific gravity." It will help ascertain the desired water amount.)
  - Add the desired amount of water to a bucket (or split the water between two buckets if mixing the whole batch).
  - Add half of the dry glaze to the bucket (or split the dry glaze between two buckets if mixing the whole batch).
  - Do not mix. Let the material slake (or wet) for 5-15 minutes without mixing or agitation.
5. **Analyze the glaze.** Most, if not all, of the material should be wetted. If the glaze is rather plastics heavy, a small amount of additional water may be needed. Let slake for a few more minutes.
6. **Mix the ingredients.** Use a whisk or a drill mixer. Avoid running your mixer at full speed as this may shear the silica encapsulation on ceramic stains, leading to toxicity concerns. Mix to a smooth consistency.
  - If mixing the whole batch, pour some of the glaze back and forth between the bucket to ensure an even mix of the materials.
7. **Sieve the glaze.** Pour your glaze through a 40-mesh sieve if speckled. Use a 60-mesh sieve for all others. Ensure all the material, including material stuck to the bottom or edges of the bucket, has been broken up and wetted properly.
  - To speed up the process, use a brush or rubber rib to push material through the sieve.
  - Use a spray bottle to wet any unslaked material and continue to push material through the sieve.
8. **Test the glaze.** Dip test tile into the glaze for varying lengths of time. Use a China marker or glaze pencil to note the details of your various tests. Fire the test tiles. Note the melt and color responses that differ with the thickness of the application.
9. **Make adjustments.** If you want to add more water, flocculants, deflocculants, or other additives, measure the specific gravity so that results can be replicated.
  - Most glazes are happiest at a specific gravity of 1.45-1.55. A glaze under 1.45 will have the propensity to become hard panned without the addition of suspension aid.

## DRY GLOSS ^6 GLAZES



PGD601  
Perfect White



PGD602  
Incredible Black



PGD607  
Nassau Blue



PGD608  
Cobalt Blue



PGD614  
Grass Green



PGD616  
Buckwheat



PGD617  
Fiesta Yellow



PGD618  
Terrazzo



PGD624  
Ripe Apple Red



PGD628  
Shiny Turquoise



PGD629  
Super Clear



PGD630  
Zinc-Free Clear



PGD634  
Scotch Pine



PGD635  
Black Patent



PGD637  
Tutu Pink



PGD639  
Hot Orchid



PGD640  
Lavender Lupin



PGD641  
White Cloud



PGD647  
Burnt Orange



PGD649  
Grey

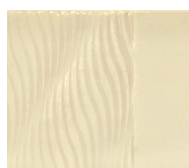


PGD650  
Brown

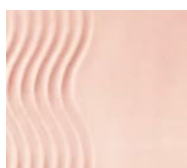


PGD654  
No More Tears Clear

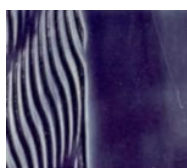
## DRY SATIN ^6 GLAZES



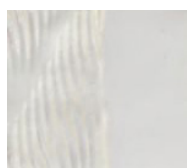
GS402D  
Translucent Satin



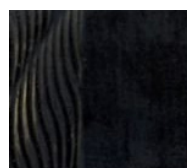
GS408D  
Soft Pink Satin



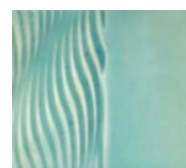
GS409D  
Purple Satin



GS410D  
White Satin

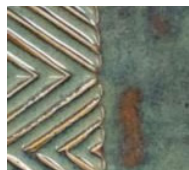


GS412D  
Black Satin



GS413D  
Robin's Egg Satin

## DRY TIE-DYE ^6 GLAZES



TD502D  
Galaxy Blue



TD504D  
Blue Dusk



TD506D  
Lichen Green



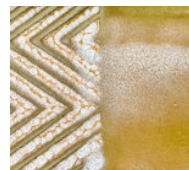
TD507D  
Seafoam



TD509D  
Rose Gold



TD510D  
Halo Purple



TD514D  
Milk & Honey

## DRY SCULPTURAL ^6 GLAZES



GLW02D  
Blue Jeans



GLW06D  
Liquid Luster Bronze



GLW08D  
Copper Patina



GLW12D  
Eggshell Wash



GLW19D  
Moss Thicket



GLW25D  
Aqua Gemstone



GLW26D  
Mustard Wood Ash



GLW27D  
Emerald Wood Ash



GLW32D  
Latte



GLW34D  
Ohata Red



GLW36D  
NW Woods  
Green Matte



GLW37D  
Pure White Matte



GLW39D  
Vanilla Cream Matte



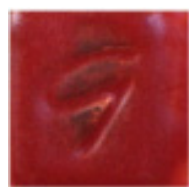
GLW40D  
Golden Raspberry  
Matte



GLW42D  
Blueberry Matte



GLW46D  
Northern Lights



GLW54D  
Paprika Matte



GLW55D  
Turmeric Matte



GLW56D  
Chartreuse Matte